



TruDrop Planting Guide

Finally, a planter that works for you.

CRESCENT
garden

©TruDropONE

Welcome to your new
TruDrop experience

Success Starts Here

With a TruDrop self-watering planter, growing beautiful flowers and healthy edibles has never been easier. We want to thank you for choosing Crescent Garden as your simple solution for growing great plants.

Enjoy!

Table of Contents

| | |
|---------------------------------------------|-----------|
| Quick Start Guide | 6 |
| How does TruDrop work for you? | 12 |
| Growing with TruDrop | 18 |
| Style Guide | 24 |

Finally, a planter that works for you.

The TruDrop System DNA

Easy To Read Water level Indicator



EMPTY



1/2



FULL

Easy To Fill Hole

Includes cap to avoid water contamination.

Double Wall Construction

Large water reservoir holds up to 6 weeks of water.

Capillary Action

Watering via roots creates healthy plants.



Mess Free Drain System

Optional quick connect coupling in larger planters facilitates draining planter without spillage. (Can connect directly to hose or pump).



Sealed plug allows for indoor use

For indoor use, red plug must be screwed in. For outdoor this hole leads to overflow tube to allow exit of excess rainwater.



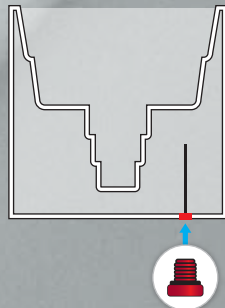
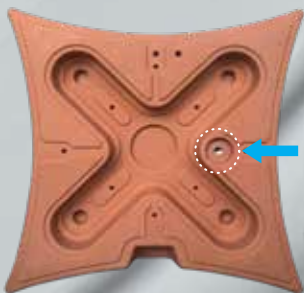
Quick Start Guide

1.

Indoor or outdoor?

If using indoors, screw red plug on the bottom of the planter. See diagram below to identify hole.

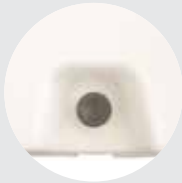
(Red plug arrives from factory with a silicon o-ring to make sure you have a water tight seal. If re-using season after season, make sure black ring is not missing.)



2.

Drain:

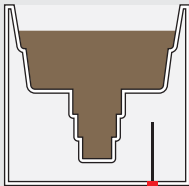
Assembly main drain by position rubber tube inside planter hole for main drain. Then introduce the grey plug. Make sure to push until grey plug has entered all the way and side ribbing is no longer visible.



3.

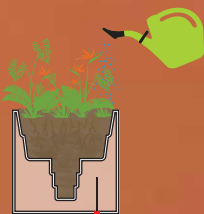
Plant:

Fill planter with a good quality potting mix. Leave enough space so that once you add your plants, the top of the root ball is approximately 1 1/2 inches (4 cm) from the top. Add plants and additional mix until full.

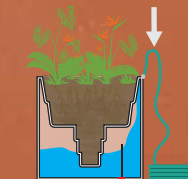


4. Water:

Water the container thoroughly from the top. For best results, mix in a water soluble fertilizer.



Remove cap from intake hole and slowly continue filling the container via the latter, until indicator reads full.



0%



50%



100%

Note: When planting indoors, add water until both circles are visible. Since the overflow drain is now plugged, overfilling reservoir can cause plants to flood.



5. Grow:

Initially, monitor the water level indicator every week.

Ideal water frequency will vary depending on plant species, location of planter and weather conditions. After initial watering, add water only through the intake hole unless watering with a foliar feed.



Winter Conditions:

If using planter outdoors in freezing conditions, it is recommended that you remove the gray barbed plug in order to drain the tank. Allowing water to freeze in the tank may damage internal components.



How does TruDrop
work for you?



Easy

- Built-in system - no assembly required.
- Water level indicator takes the guessing out of when and how much to water.
- Empty planters are lightweight for easy portability.
- Less work with less watering.





- Apt for growing food
- Fully enclosed water supply keeps out pests.

Safe





Success

- Watering from the bottom up lets your plants take only the amount of water they need and lowers the risk of fungus and disease.
- The built-in overflow drain allows for outdoor planters to safely weather rain showers.





Efficient

- Trudrop system planters work with you to protect our environment.



MANUFACTURING

Responsible manufacturing is always in our fundamentals: efficient, safe, environmentally aware and always considering the impact on our communities.



100% RECYCLABLE

Using materials that are 100% recyclable and easy to re-use is important.



DISTRIBUTION

Our products are lightweight and unbreakable requiring less energy and packaging for transportation.



AT HOME

Fully enclosed system saves water and diminishes fertilizer run-off.



- Indoor and outdoor use.
- Designs for every style.
- Useful for growing a wide variety of plants from edibles to ornamentals.

Versatile



Growing with TruDrop



Planting tips

Water all plants before adding them in your planter, especially if planting multiple planters or planting in hot weather.

To remove plants from growing containers squeeze several times and turn sideways to gently loosen the plant from the container. Once removed be sure to use fingers or hand trowel to loosen the soil around the roots before placing in the planter.



Good soil matters

Choose a good quality container potting mix. The soil should be light and fluffy for good aeration (products like vermiculite or perlite), have moisture retention (products like coir or peat moss), compost (for nutrient retention, minerals, and soil structure), slow release fertilizer, and some type of forest (wood) product.

Only fill with potting mix. Use of gravel or other medium could affect performance of TruDrop system.



Fertilizing

A liquid fertilizer can be applied once a month to flowering plants and edibles, and every three months for evergreens. Follow the instructions for mixing with water and pour over the plants. This is best done before adding water to the reservoir so that you don't overfill it.

Changing out plants

When seasonally replanting, drain the water reservoir from your Trudrop planter before removing all plant material and potting mix from the planter.

Once drained, the reservoir can be cleaned with just clear water or alternatively a solution of 1/2 cup hydrogen peroxide to 1 gallon of water can be used. To use the latter, return the drain plug to its position, fill with the solution, swish the liquid around the planter and let sit for 30 minutes, then unplug and rinse with clear water.



Draining

The grey plug should remain in place except for yearly rinsing or for draining in winter. The water reservoir should not be used during seasons of freezing temperatures.



Mess free drain system

The optional quick connect coupling on large planters facilitates drainage without spillage. Using the quick coupler allows you to connect directly to a hose so that reservoir can be emptied out away from the planter in a safer area. The female end of the quick coupler closes when disconnected, acting as the drainage plug, and can remain in the planter year-round.



Mobility and/or Fixing to a Location

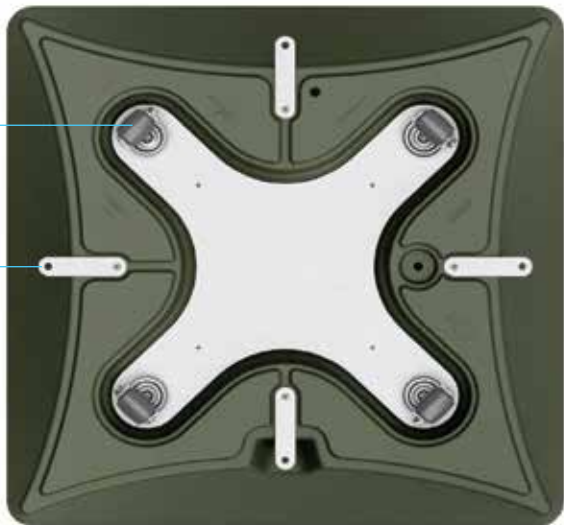
Our Pinch planters have been designed so that you are able to upgrade them and add casters at the bottom or screw them in place to the ground.

Our stainless steel attachable plate gives stability to the planter and is recessed so casters are hidden. This is great for temporary planters that need to be moved depending on the event, or for flexibility when cleaning floors.

For those looking for more permanent planters we also offer our anti-theft plates that allow you to screw the planters in place.

Rotating, recessed caster base can be added for mobility.

Anti-theft brackets can be attached to attach planter to concrete where needed.



Branding

Need to brand your property? What better way than with planters. We offer custom logos applied at our facility before shipping to you.



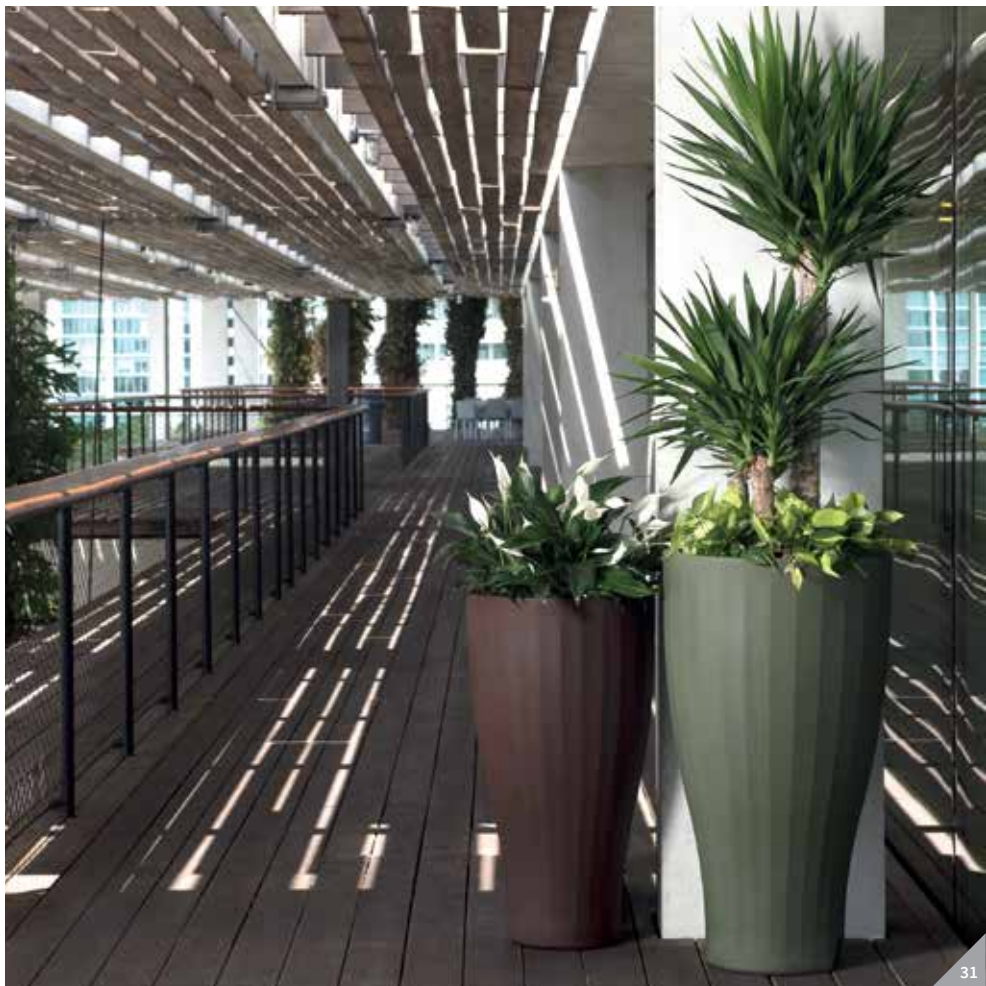
Style Guide











RESTA



URANT & BAR







CRESCENT
garden

 TruDrop ONE

We love to see gardens grow,
share your stories with us
or connect to ask us for advice.

 /CrescentGardens

 /CrescentGarden

 /CrescentGarden

 /CrescentGarden

TruDrop Planters patent information: <https://www.crescentgarden.com/pat/>